

A woman with long, dark, wavy hair is standing on a balcony. She is wearing a white floral-patterned cardigan over a white top and light-colored trousers. She is holding a white mug with both hands and looking off to the side with a slight smile. The balcony has a glass railing, and the background shows a modern building with large windows and some greenery.

## View lifestyle from the top

The Views  
Mohali Hills, Mohali

2, 3 and 4 BHK  
Apartments and Penthouses

## Overview

Comprising of 2, 3 and 4 bedroom apartments and penthouses, The Views contain world-class apartment towers within Mohali Hills. A plush lifestyle filled with comfort, convenience and security, making it the epitome of distinctive living. Uniquely built around elegantly landscaped gardens, parklands and communal courtyards, The Views will provide an exceptional environment for modern day living. Being a part of the integrated master planned township, one can take pleasure in recreational sports facilities, clubhouse, jogging track and open spaces for a healthier lifestyle.



Actual Photo



Located in Sector 105. Just 20 minutes away from Sector 17 and Chandigarh International Airport, with a 100 feet wide road connecting Mohali Hills to 200 feet wide Airport Road.

## Highlights

- Part of a master planned community of Mohali Hills
- 80% open area with gardens and pavements
- Recreational facilities including swimming pool, tennis court and clubhouse





- |                    |             |
|--------------------|-------------|
| 1. Club            | 6. Tower G  |
| 2. Swimming Pool   | 7. Tower H  |
| 3. Tennis Court    | 8. Tower J  |
| 4. Badminton Court | 9. Tower K  |
| 5. Tower F         | 10. Tower L |



# Floor Plan

PENTHOUSE | LOWER FLOOR PLAN | TOWER F

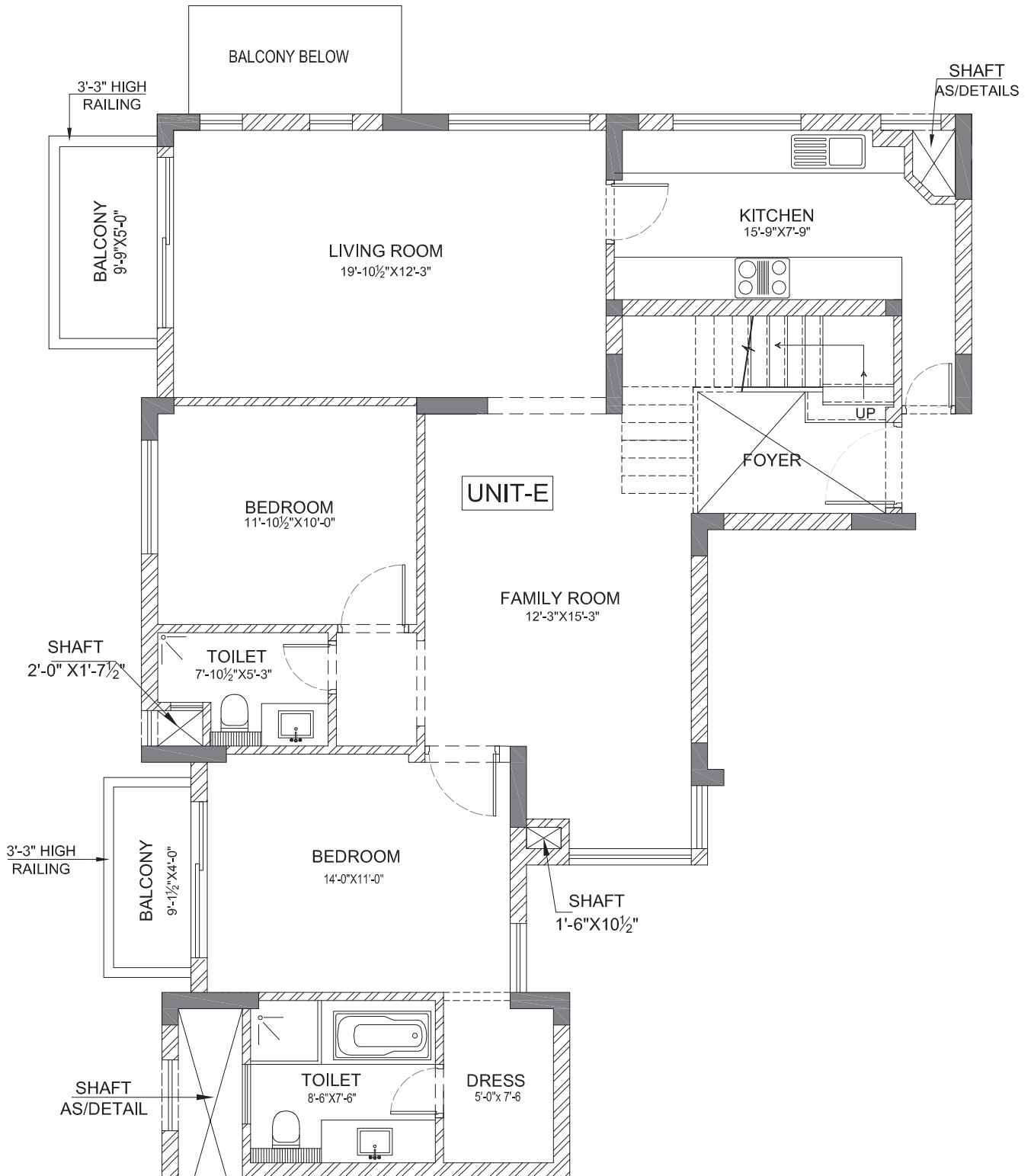
LIVING | FAMILY | 2 BEDROOMS | 2 BATHROOMS | KITCHEN

Carpet Area: 197.5 sq. mtr. (2,125.8 sq. ft.)

Balcony Area: 11.5 sq. mtr. (123.5 sq. ft.)

Terrace Area: 17.6 sq. mtr. (189.6 sq. ft.)

Super Area: 301.9 sq.mtr. (3,250.0 sq.ft.)



In the interest of maintaining high standards, all floor plans, layout plans, areas, dimensions and specifications mentioned are indicative and are subject to change as decided by the company or by any competent authority. 1 sq. mtr. = 1.196 sq. yds. & 1 sq. mtr. = 10.764 sq. ft. All dimensions are from Masonry to Masonry.

# Floor Plan

PENTHOUSE | UPPER FLOOR PLAN | TOWER F

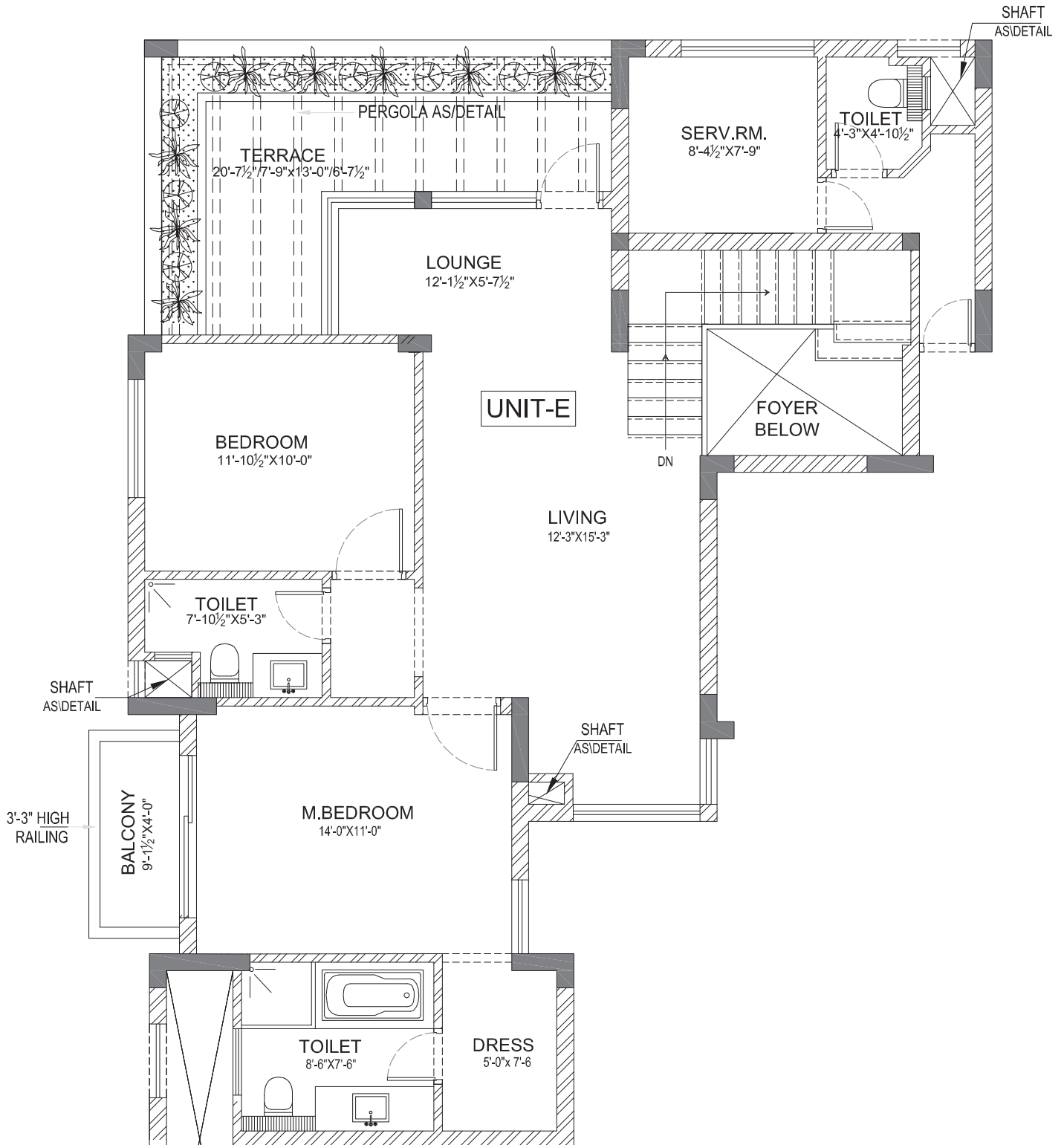
LIVING | LOUNGE | 2 BEDROOMS | 2 BATHROOMS | TERRACE | SERVANT ROOM

Carpet Area: 197.5 sq. mtr. (2,125.8 sq. ft.)

Balcony Area: 11.5 sq. mtr. (123.5 sq. ft.)

Terrace Area: 17.6 sq. mtr. (189.6 sq. ft.)

Super Area: 301.9 sq.mtr. (3,250.0 sq.ft.)



# Floor Plan

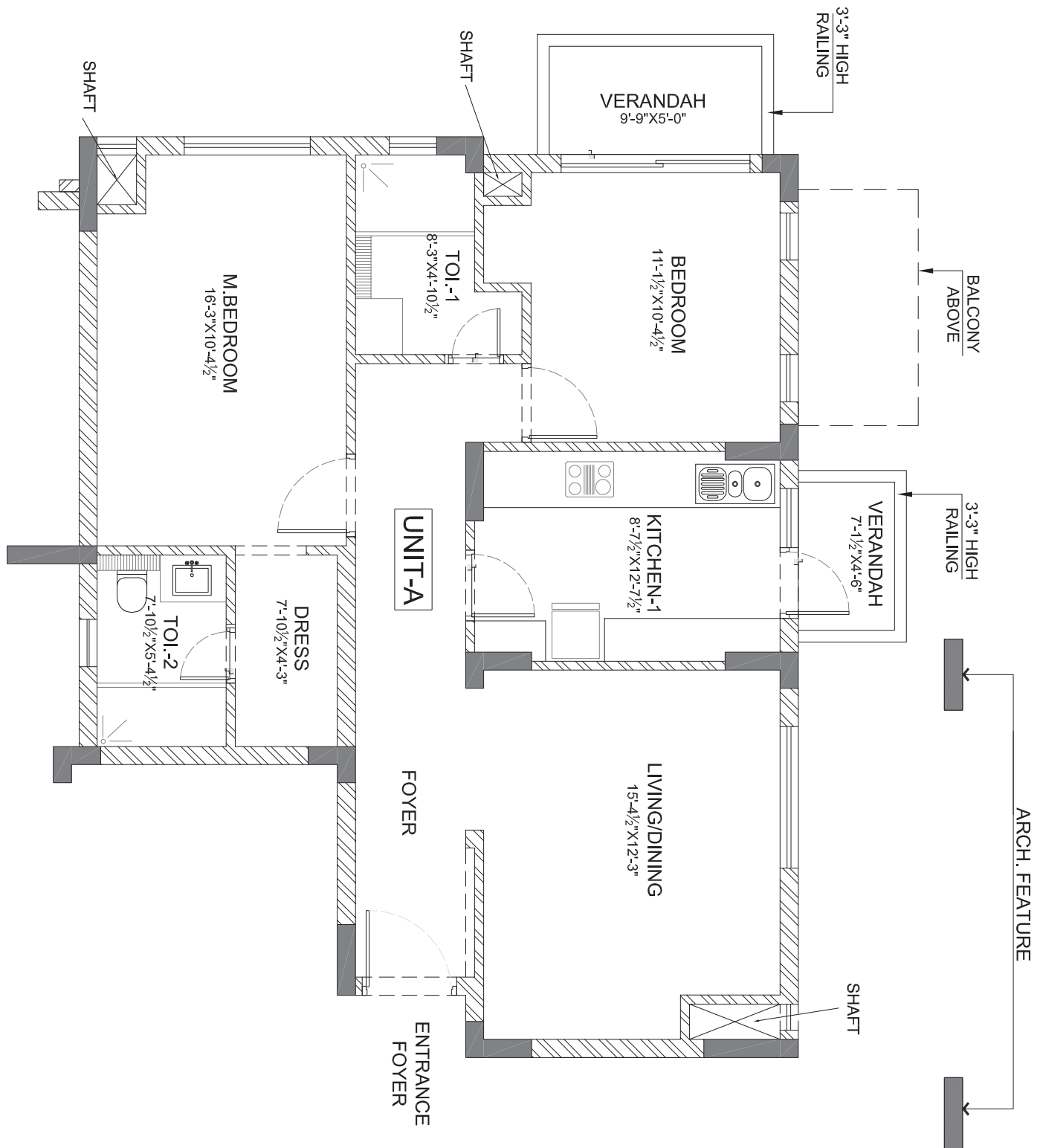
## SUITE 1 | TOWER F (TYPICAL GROUND FLOOR)

LIVING | DINING | 2 BEDROOMS | 2 BATHROOMS | KITCHEN

Carpet Area: 81.6 sq. mtr. (878.4 sq. ft.)

Verandah Area: 7.6 sq. mtr. (81.5 sq. ft.)

Super Area: 125.4 sq.mtr. (1,350 sq.ft.)





# Floor Plan

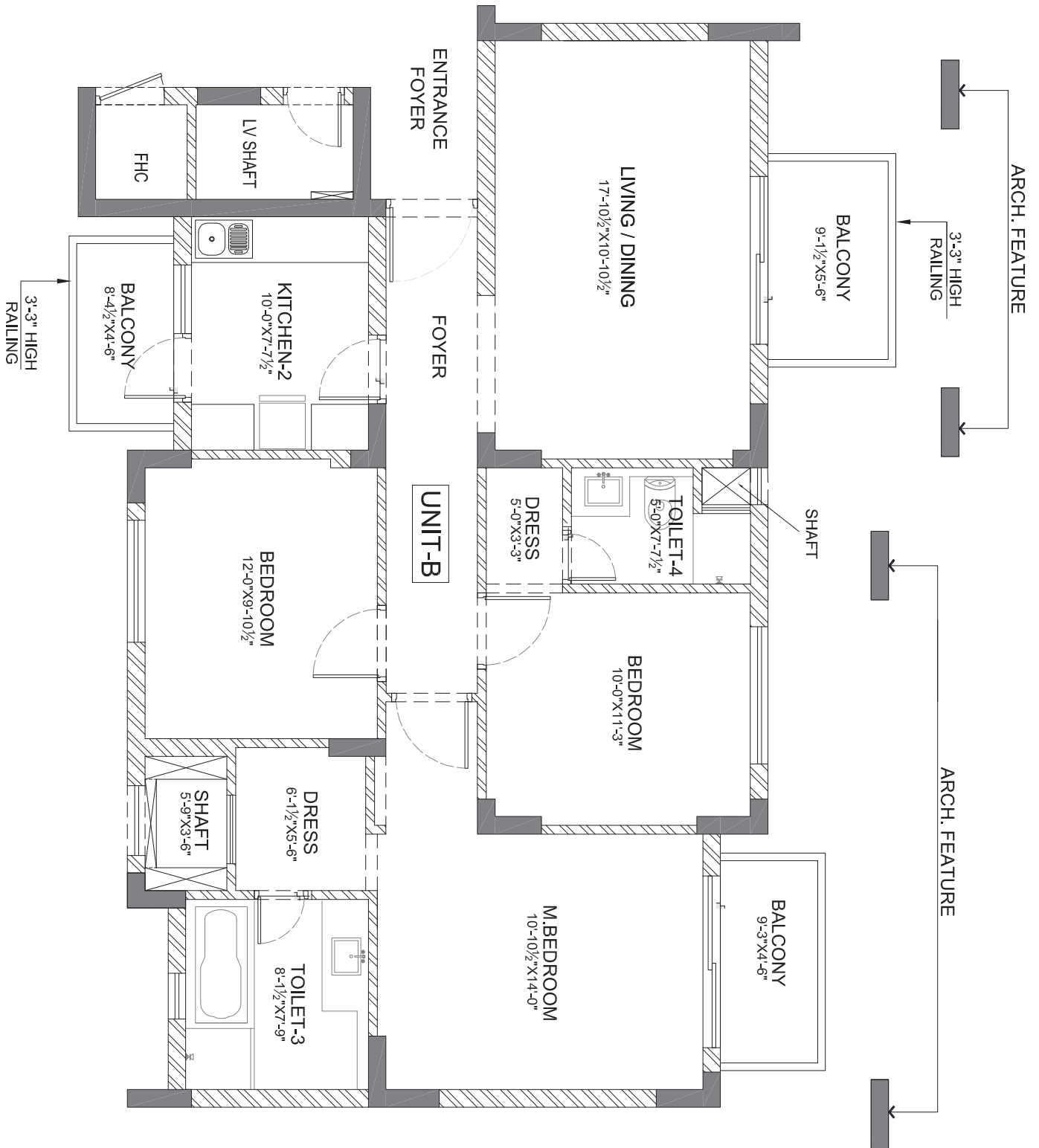
## SUITE 3 | TOWER F

LIVING | DINING | 3 BEDROOMS | 2 BATHROOMS | KITCHEN

Carpet Area: 89.9 sq. mtr. (968 sq. ft.)

Balcony Area: 12.1 sq. mtr. (130.5 sq. ft.)

Super Area: 144 sq.mtr. (1550 sq.ft.)



# Floor Plan

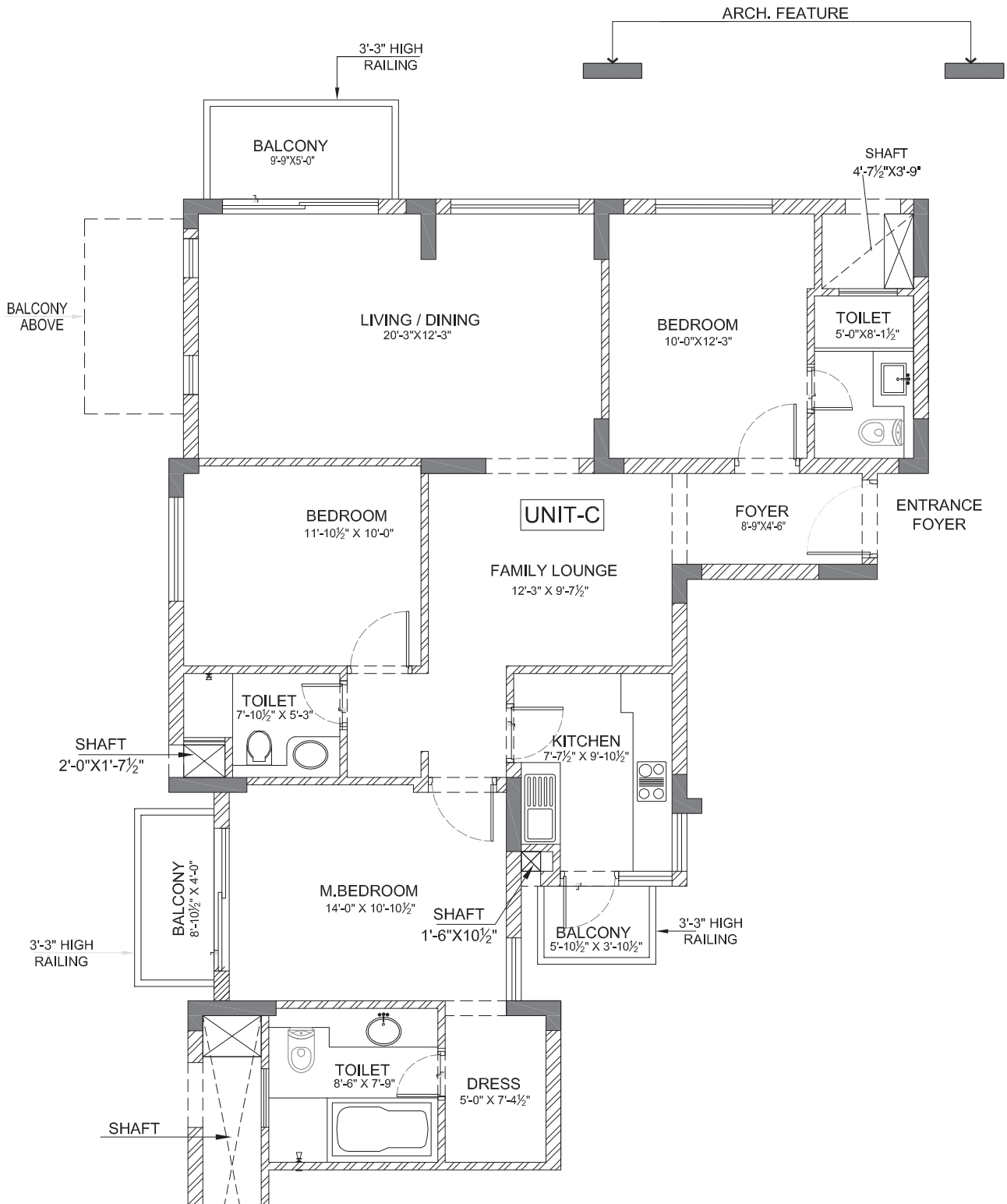
## SUITE 4 | TOWER F

LIVING | DINING | 3 BEDROOMS | 3 BATHROOMS | FAMILY LOUNGE | KITCHEN

Carpet Area: 109.1 sq. mtr. (1,174 sq. ft.)

Balcony Area: 10.1 sq. mtr. (108.9 sq. ft.)

Super Area: 162.6 sq.mtr. (1,750 sq.ft.)



# Floor Plan

PENTHOUSE | LOWER FLOOR PLAN | TOWER H

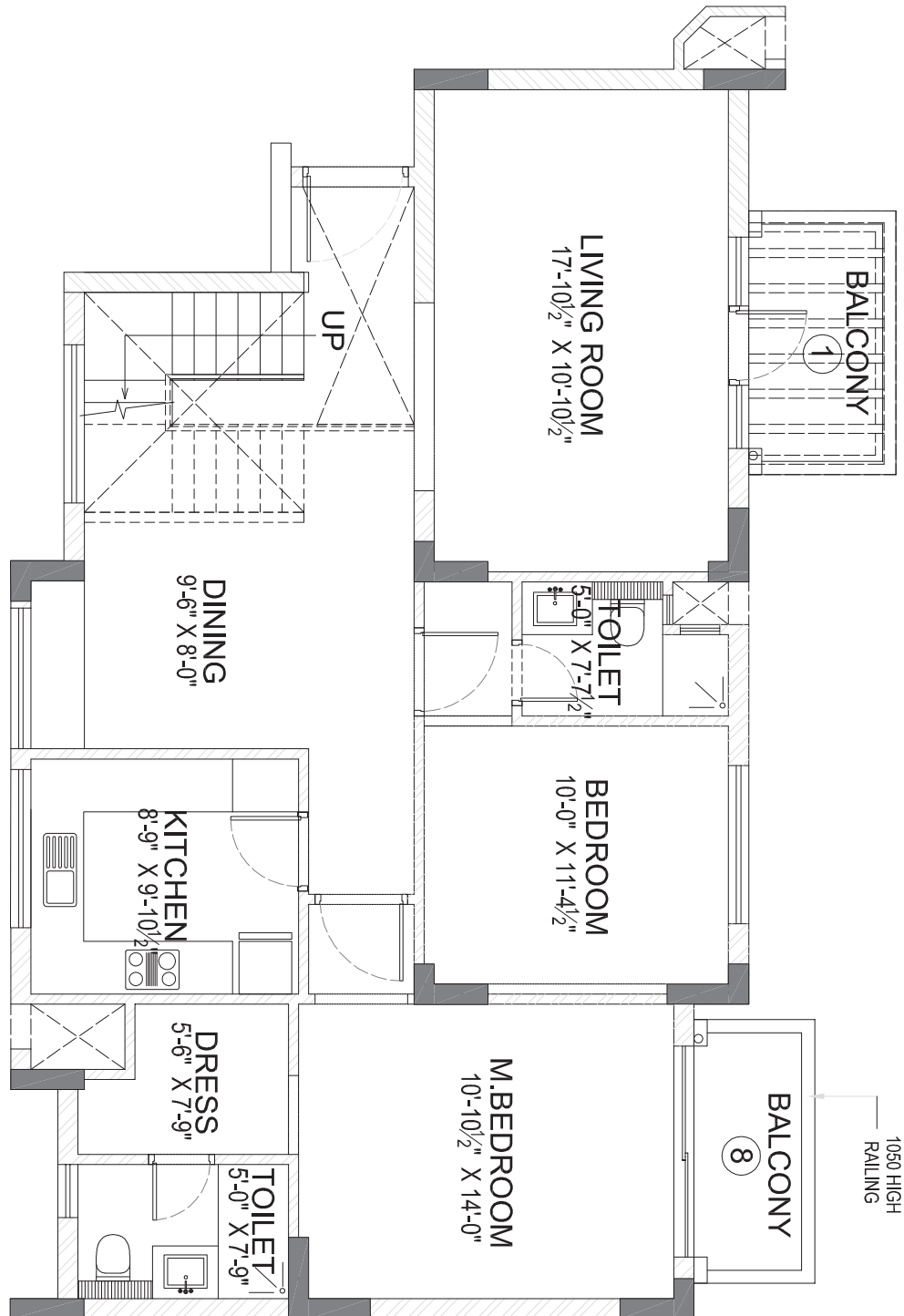
LIVING | DINING | 2 BEDROOMS | 2 BATHROOMS | KITCHEN

Carpet Area: 167.6 sq. mtr. (1,803.8 sq. ft.)

Balcony Area: 13.3 sq. mtr. (142.9 sq. ft.)

Terrace Area: 9.7 sq. mtr. (103.9 sq. ft.)

Super Area: 269.4 sq.mtr. (2,900 sq.ft.)



# Floor Plan

PENTHOUSE | UPPER FLOOR PLAN | TOWER H

FAMILY LOUNGE | 2 BEDROOMS | 2 BATHROOMS | TERRACE | SERVANT ROOM

Carpet Area: 167.6 sq. mtr. (1,803.8 sq. ft.)

Balcony Area: 13.3 sq. mtr. (142.9 sq. ft.)

Terrace Area: 9.7 sq. mtr. (103.9 sq. ft.)

Super Area: 269.4 sq.mtr. (2,900 sq.ft.)



# Floor Plan

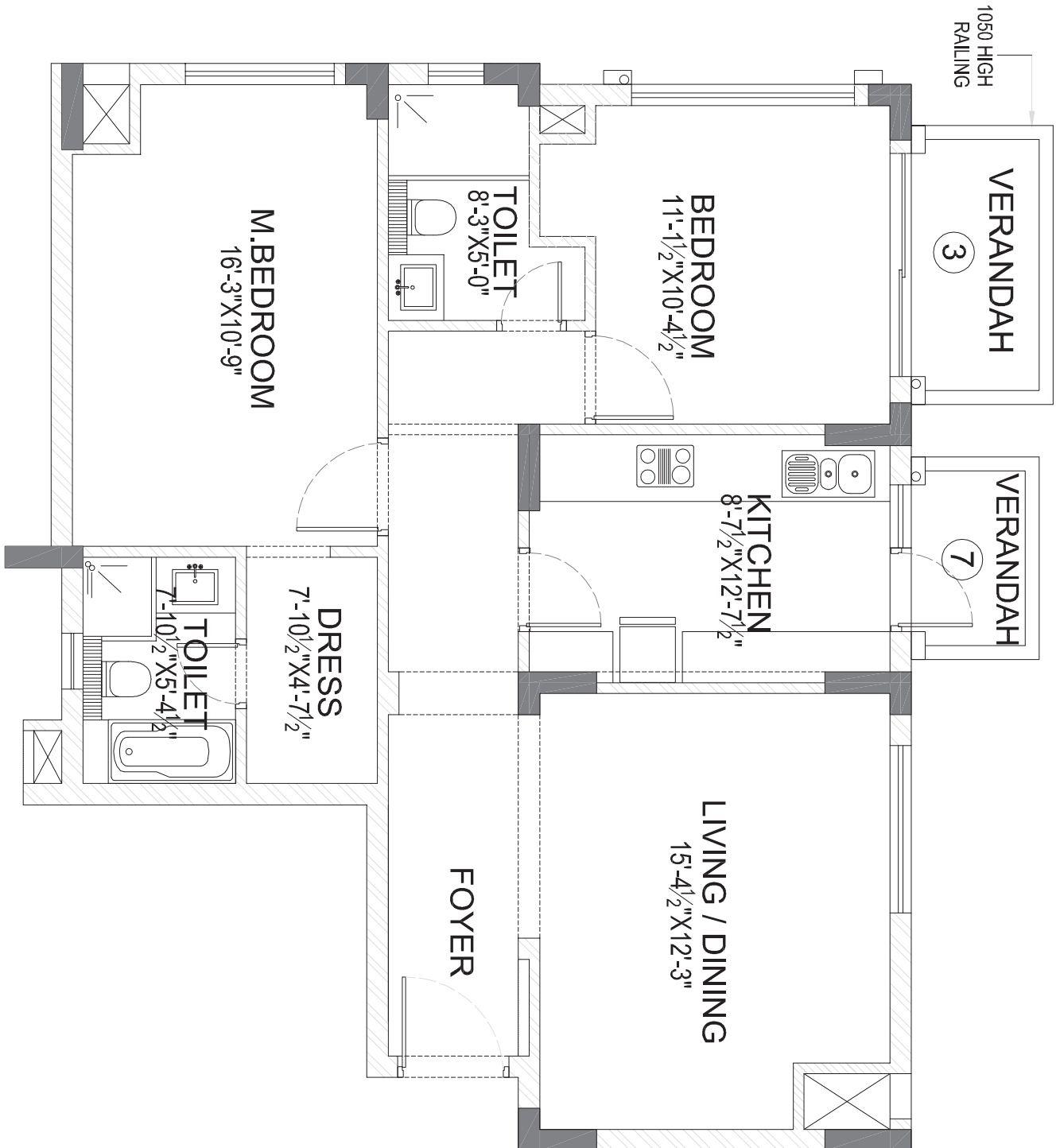
SUITE 1 | TOWER H (TYPICAL GROUND FLOOR)

LIVING | DINING | 2 BEDROOMS | 2 BATHROOMS | KITCHEN

Carpet Area: 82.0 sq. mtr. (882.4 sq. ft.)

Verandah Area: 7.6 sq. mtr. (81.2 sq. ft.)

Super Area: 125.4 sq.mtr. (1,350 sq.ft.)



# Floor Plan

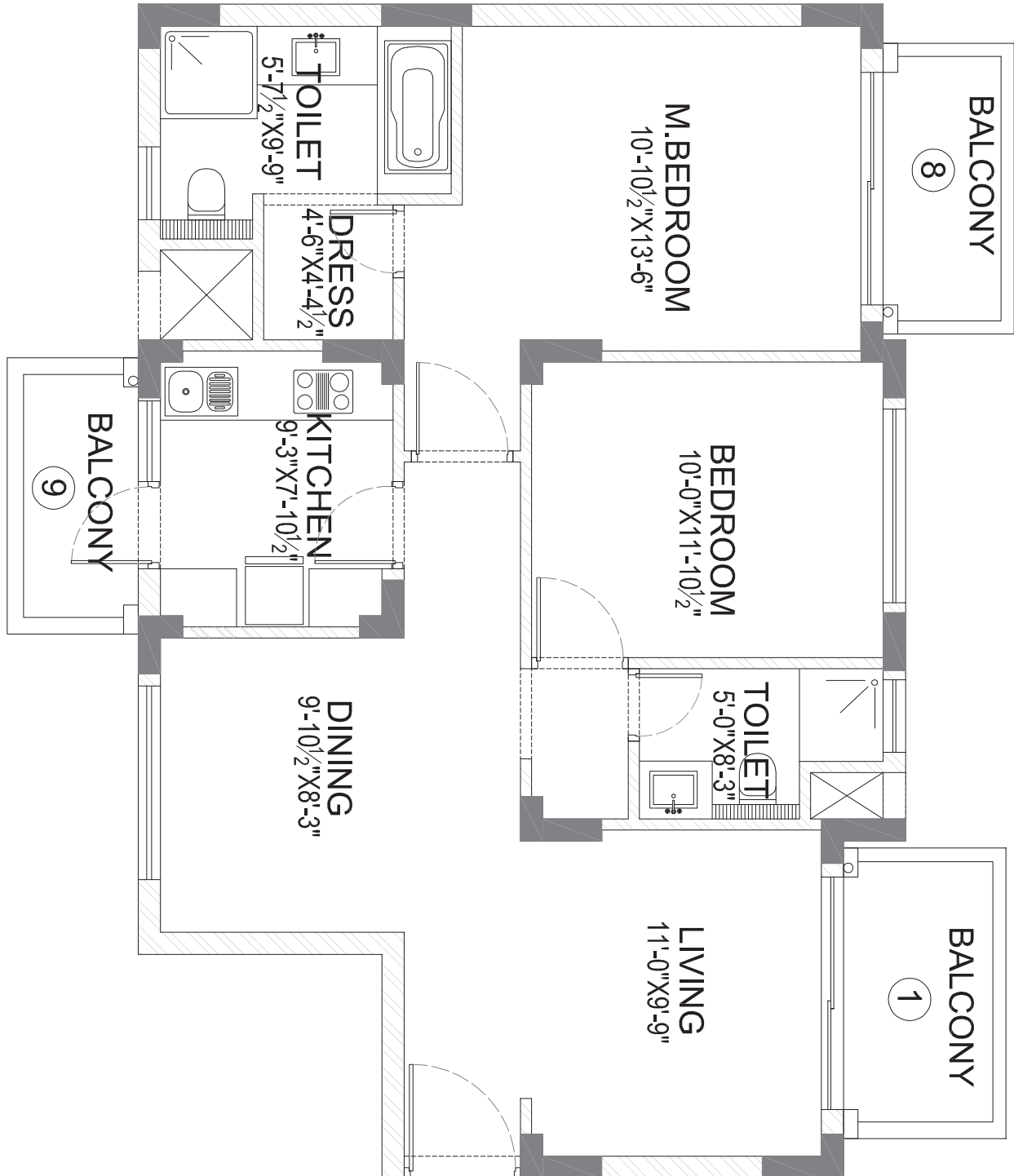
SUITE 2 | TOWER H

LIVING | DINING | 2 BEDROOMS | 2 BATHROOMS | KITCHEN

Carpet Area: 76.3 sq. mtr. (821 sq. ft.)

Balcony Area: 12.9 sq. mtr. (138.6 sq. ft.)

Super Area: 125.4 sq.mtr. (1,350 sq.ft.)



# Floor Plan

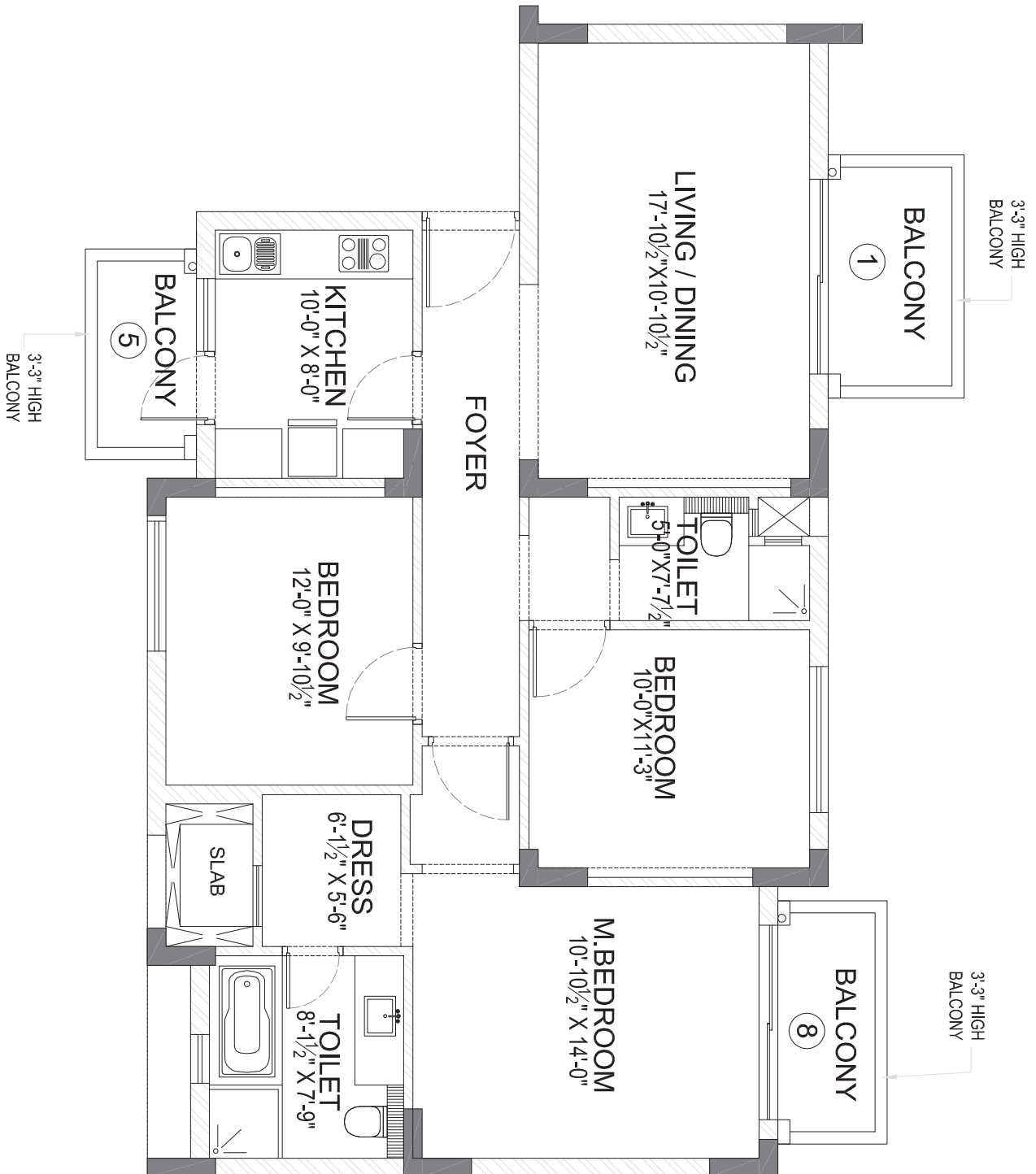
SUITE 3 | TOWER H

LIVING | DINING | 3 BEDROOMS | 2 BATHROOMS | KITCHEN

Carpet Area: 89.9 sq. mtr. (968 sq. ft.)

Balcony Area: 12.6 sq. mtr. (136.1 sq. ft.)

Super Area: 144.0 sq.mtr. (1,550 sq.ft.)



# Floor Plan

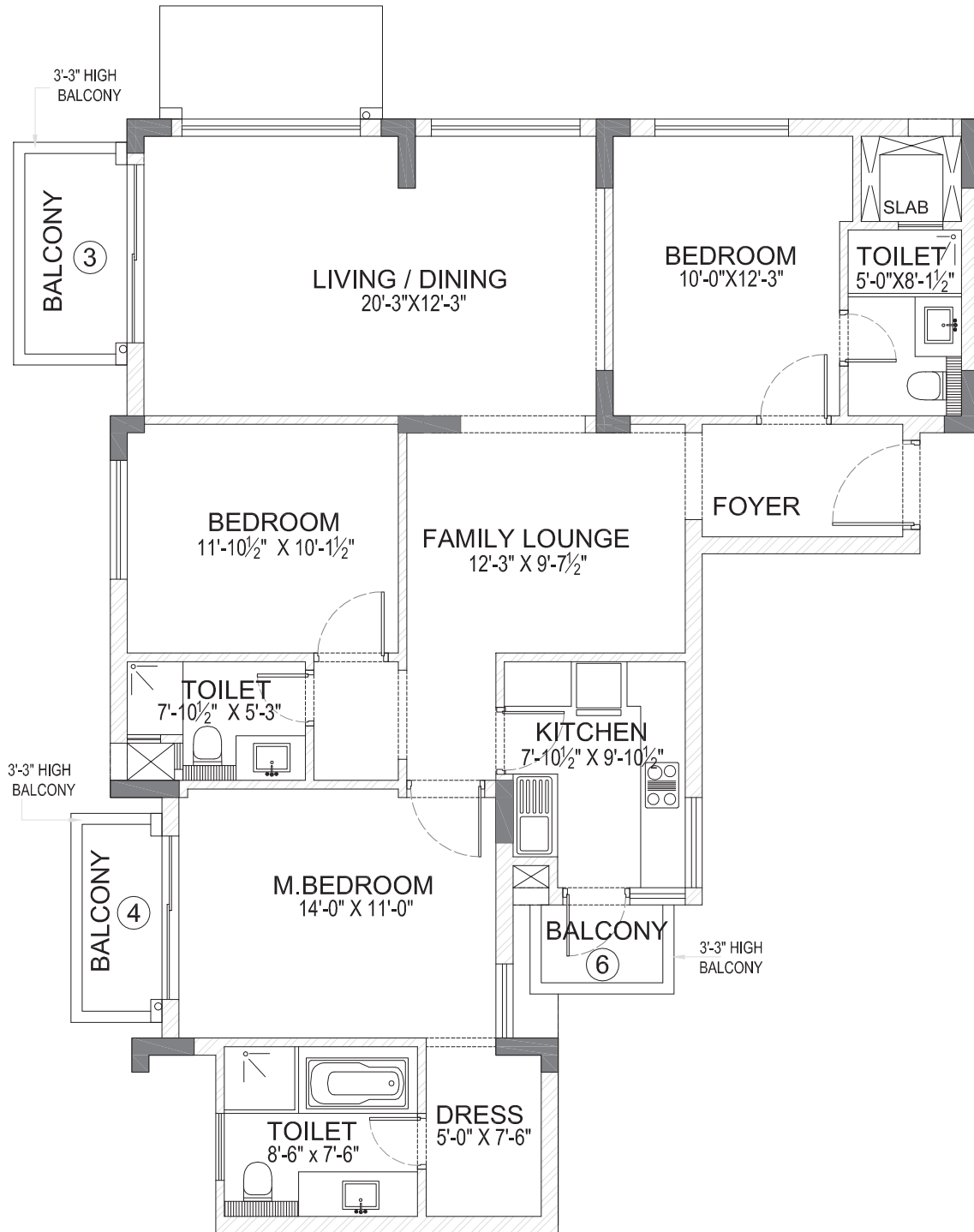
## SUITE 4 | TOWER H

LIVING | DINING | 3 BEDROOMS | 3 BATHROOMS | FAMILY LOUNGE | KITCHEN

Carpet Area: 109.0 sq. mtr. (1,173 sq. ft.)

Balcony Area: 10.3 sq. mtr. (111.4 sq. ft.)

Super Area: 162.6 sq.mtr. (1,750 sq.ft.)





# Floor Plan

## PENTHOUSE 1 | TOWER L

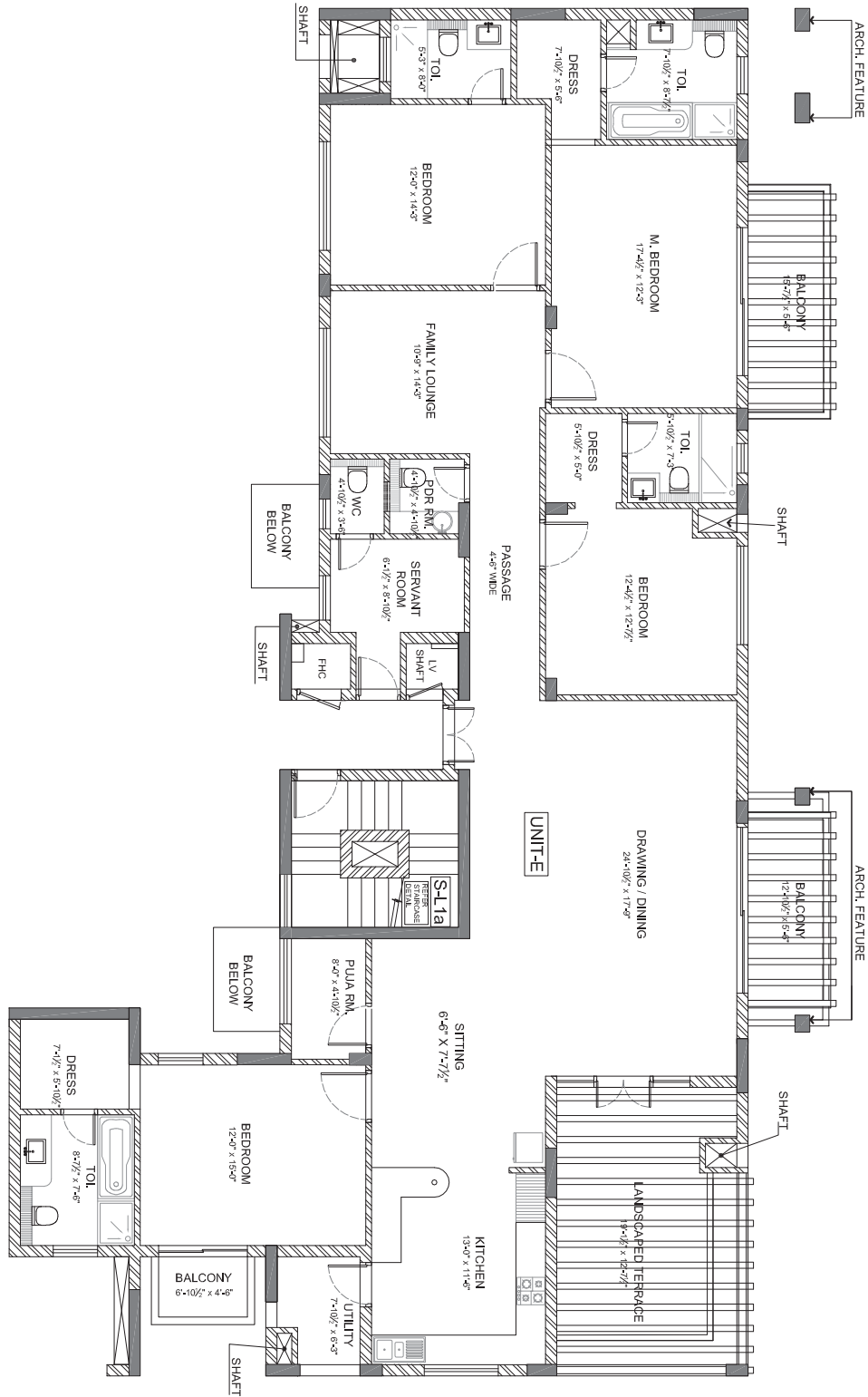
LIVING | DINING | 4 BEDROOMS | 4 BATHROOMS | FAMILY LOUNGE | KITCHEN | SERVANT ROOM | PUJA ROOM

Carpet Area: 207.8 sq. mtr. (2,236.3 sq. ft.)

Balcony Area: 21.2 sq. mtr. (227.6 sq. ft.)

Terrace Area: 21.7 sq. mtr. (234.0 sq. ft.)

Super Area: 327.5 sq.mtr. (3,525.0 sq.ft.)



# Floor Plan

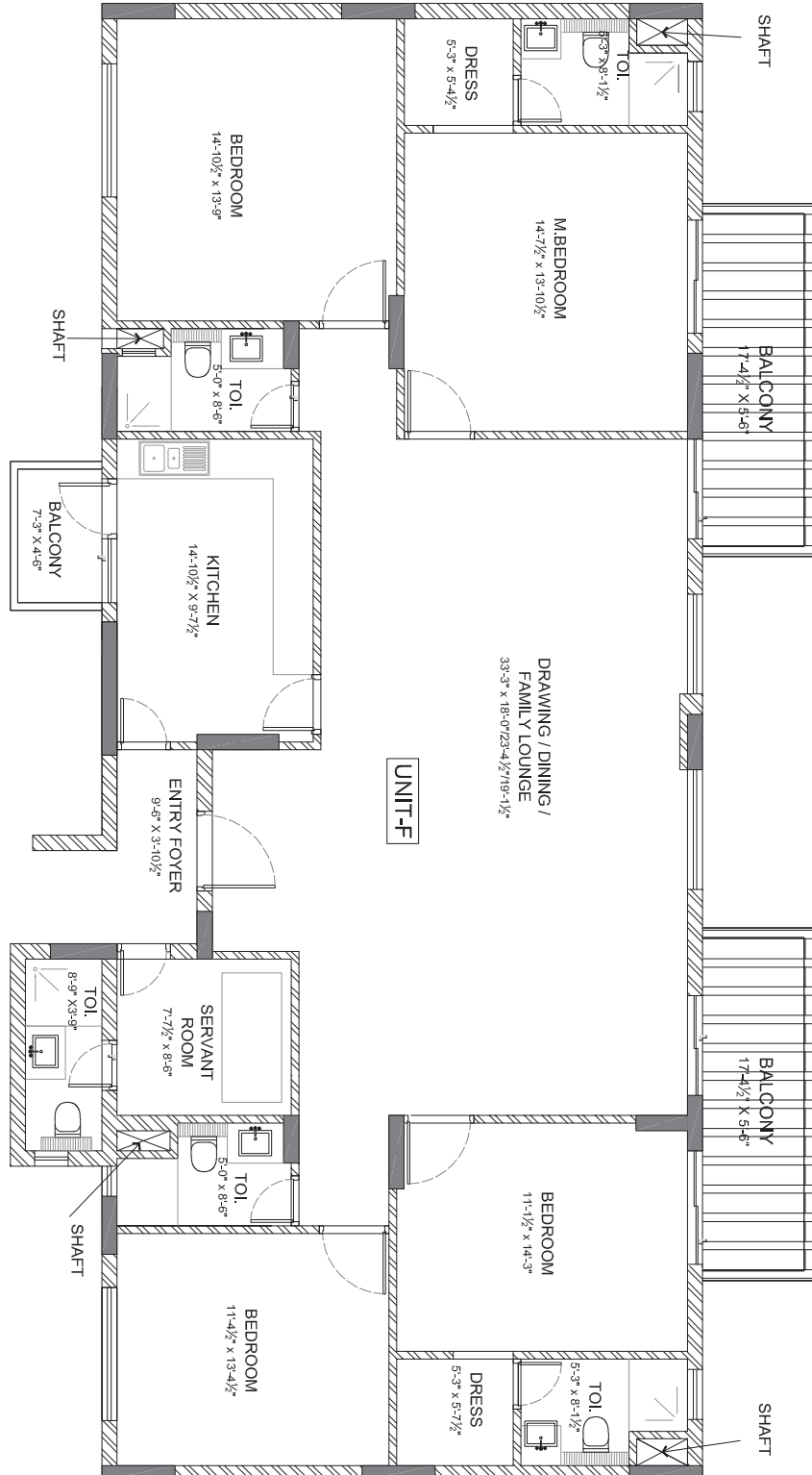
## PENTHOUSE 2 | TOWER L

DRAWING | DINING | 4 BEDROOMS | 4 BATHROOMS | FAMILY LOUNGE | KITCHEN | SERVANT ROOM

Carpet Area: 182.8 sq. mtr. (1,967.6 sq. ft.)

Balcony Area: 20.8 sq. mtr. (224.2 sq. ft.)

Super Area: 241.6 sq.mtr. (2,600.0 sq.ft.)



# Floor Plan

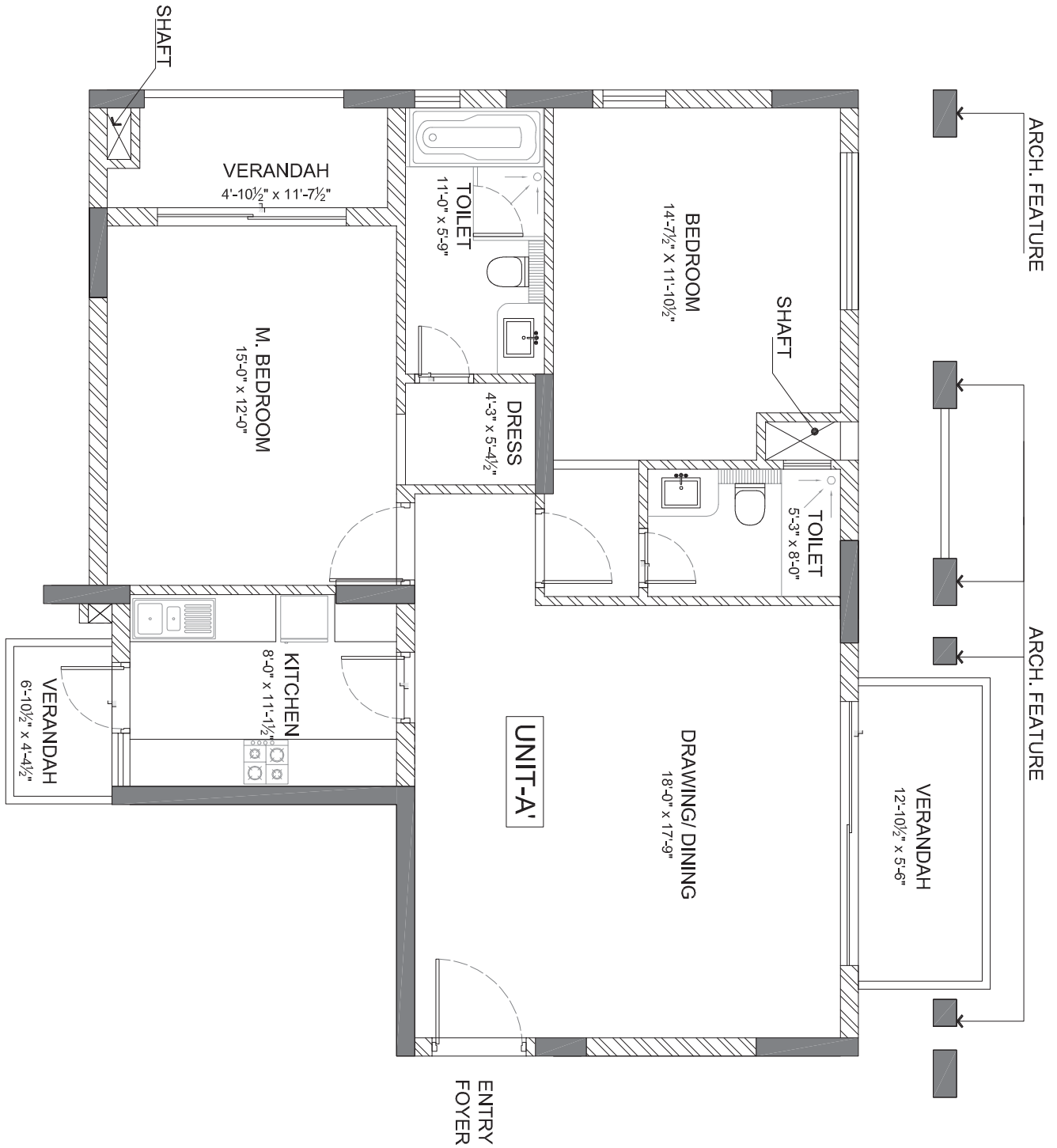
SUITE 1 | TOWER L

DRAWING | DINING | 2 BEDROOMS | 2 BATHROOMS | KITCHEN

Carpet Area: 90.6 sq. mtr. (975.2 sq. ft.)

Verandah Area: 14.3 sq. mtr. (153.5 sq. ft.)

Super Area: 144.5 sq.mtr. (1,555.0 sq.ft.)



# Floor Plan

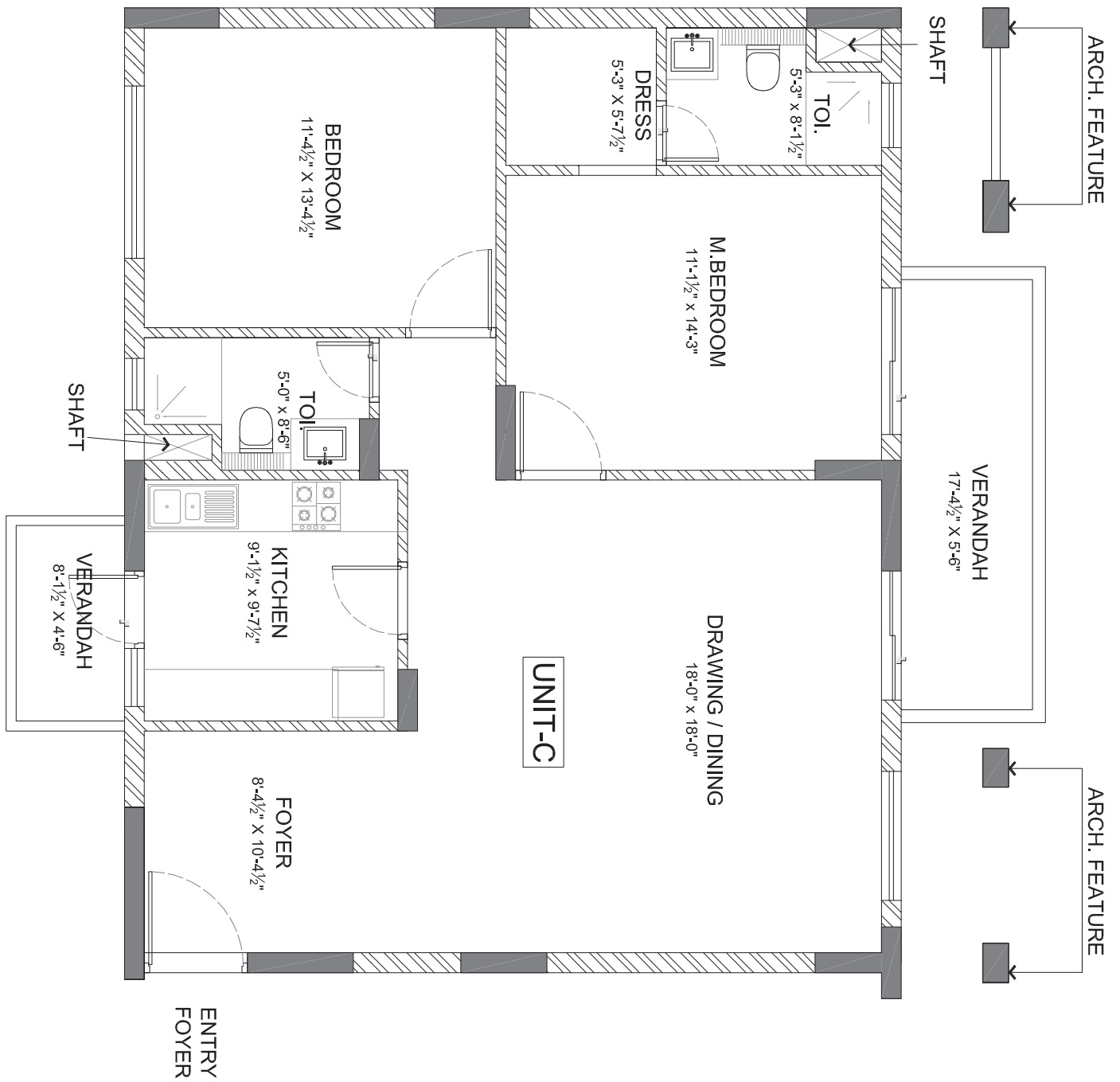
SUITE 2 | TOWER L

DRAWING | DINING | 2 BEDROOMS | 2 BATHROOMS | KITCHEN

Carpet Area: 91.0 sq. mtr. (979.7 sq. ft.)

Verandah Area: 12.3 sq. mtr. (132.6 sq. ft.)

Super Area: 125.4 sq.mtr. (1,350.0 sq.ft.)



# Floor Plan

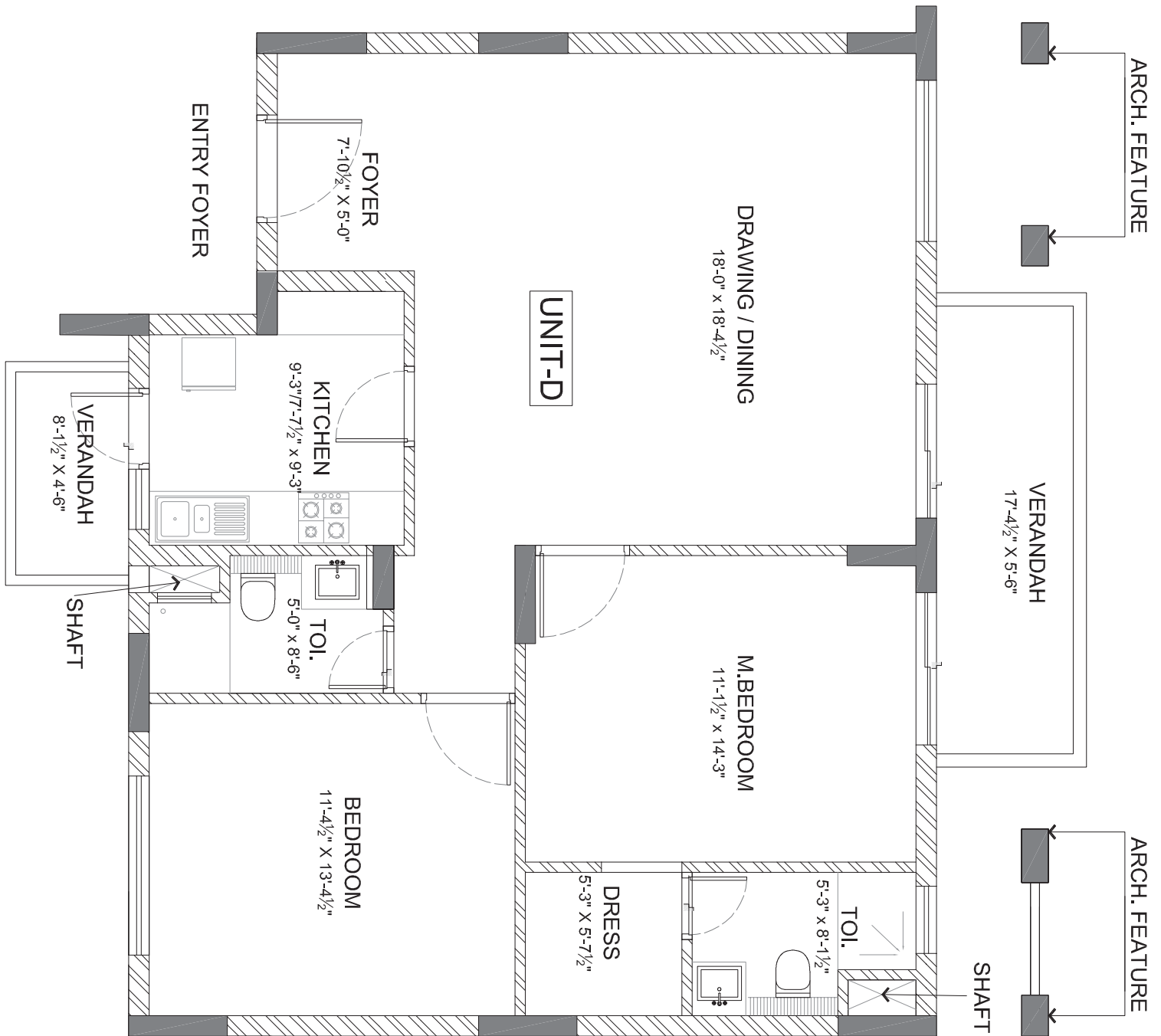
SUITE 2' | TOWER L

DRAWING | DINING | 2 BEDROOMS | 2 BATHROOMS | KITCHEN

Carpet Area: 86.5 sq. mtr. (931.4 sq. ft.)

Verandah Area: 12.3 sq. mtr. (132.6 sq. ft.)

Super Area: 125.4 sq.mtr. (1,350.0 sq.ft.)



# Floor Plan

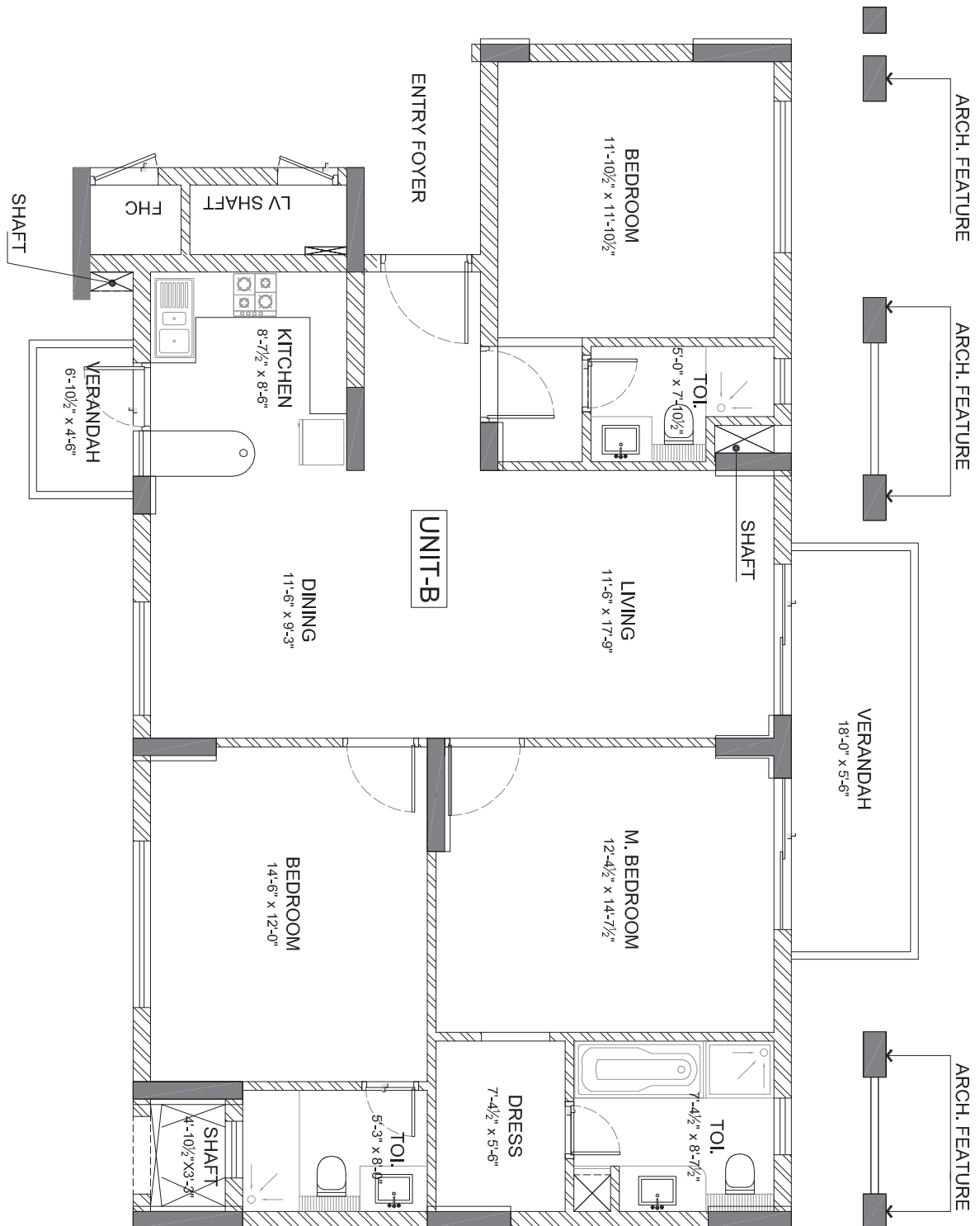
SUITE 3 | TOWER L

DRAWING | DINING | 3 BEDROOMS | 3 BATHROOMS | KITCHEN

Carpet Area: 109.7 sq. mtr. (1,181 sq. ft.)

Verandah Area: 12.1 sq. mtr. (130.2 sq. ft.)

Super Area: 167.2 sq.mtr. (1,800.0 sq.ft.)



# Floor Plan

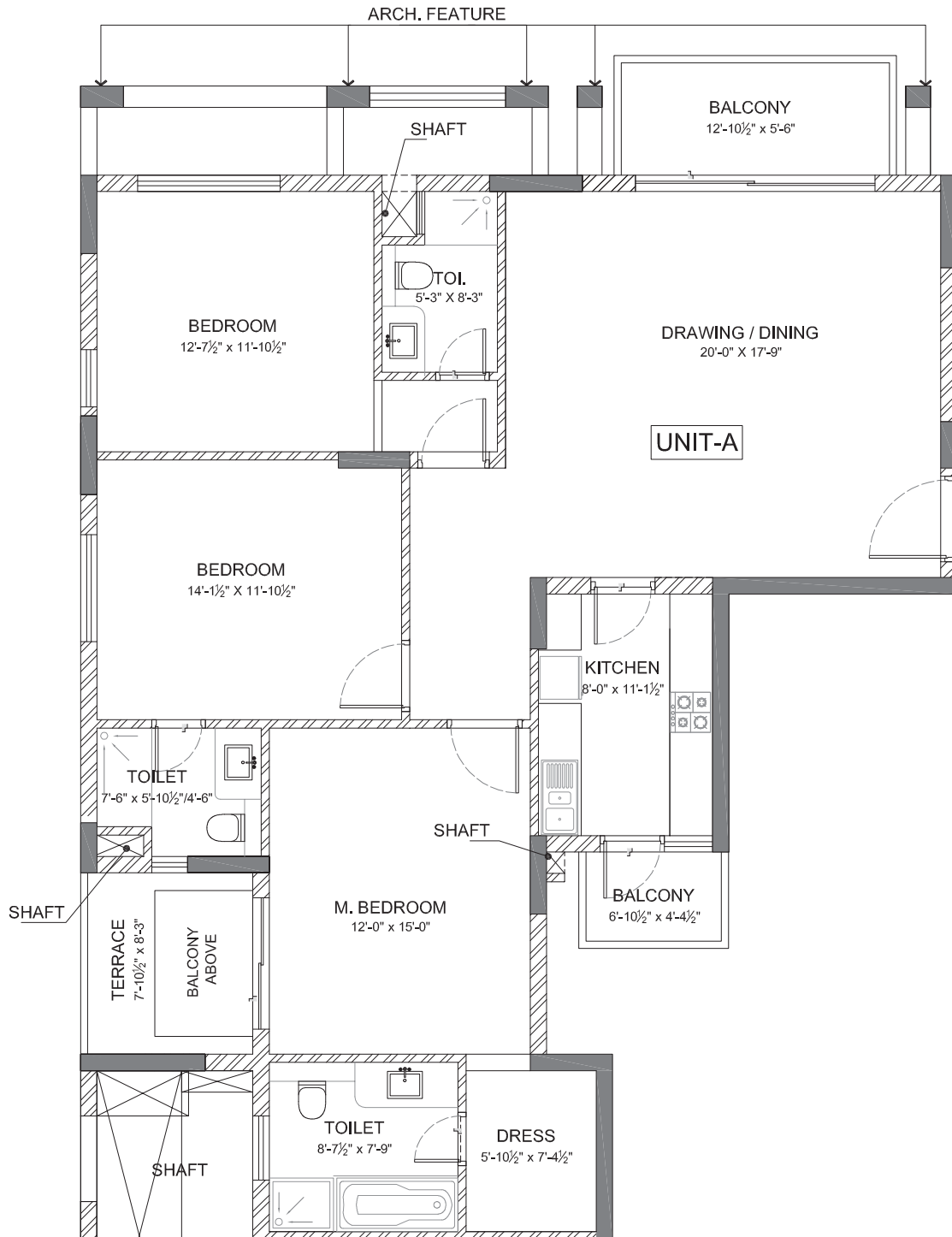
SUITE 4 | TOWER L

DRAWING | DINING | 3 BEDROOMS | 3 BATHROOMS | KITCHEN

Carpet Area: 117.6 sq. mtr. (1,265.4 sq. ft.)

Balcony Area: 12.3 sq. mtr. (132.2 sq. ft.)

Super Area: 179.3 sq.mtr. (1,930.0 sq.ft.)



# Specifications



## Living Room/Dining/Lobby/Family Room

- Laminated wooden flooring.
- POP punning with acrylic emulsion paint on walls.
- Flush door shutters in the interiors.
- UPVC doors in the exteriors.
- UPVC window frames and shutters.
- Oil bound distemper on ceiling

## Master Bedroom and other bedrooms

- Laminated wooden flooring/imported tile flooring.
- POP punning with acrylic emulsion paint on walls.
- Flush door shutters in the interiors.
- UPVC doors in the exteriors.
- UPVC window frames and shutters.
- Oil bound distemper.
- Fixed cupboard in master bedroom and free standing cupboard in other bedrooms.

## Kitchen

- Vitrified tiles on floor.
- Ceramic tiles on walls.
- Flush door shutters in the interiors.
- UPVC in the exteriors.
- UPVC frames and shutters.
- Oil bound distemper on ceiling and acrylic emulsion paint on walls.
- Granite counter top with granite splash back.
- SS sink with double bowl and drain board.
- CP fittings.
- Fitted modular kitchen with chimney.
- 4 burner stove.

## Balconies and Terraces

- Anti-skid tiles.
- Weatherproof paint on exterior walls.
- Anodized/powder coated aluminium/UPVC doors.

## Washroom

- Vitrified tiles on floor.
- Ceramic tiles on walls.
- Flush door shutters in the interiors.
- UPVC window frames and shutters.
- Oil bound distemper.
- Chinaware granite/marble counter, CP fitting and bathtub in the Master washrooms.
- Chinaware granite/marble counter and CP fittings in all the washrooms.

## Electrical and Communication

- First quality electrical wiring and modular switches.
- Concealed wiring for electrical and telephone connections.
- Power back up for Apartments.
  - 1) 7.5 KVA for 2 Bedrooms.
  - 2) 10 KVA for 3 and 4 Bedrooms

## Air-Conditioning

- Fully air-conditioned through split AC units in Bedrooms and Drawing Room.

## Utility Room

- Anti-skid tiles.
- Weather proof paint on exterior walls and ceiling.
- Flush door shutters.

## Security Systems and Technology

- Round the clock security.
- Emergency call switch.
- Close-circuit cameras.
- Intercom facility.

## Fire Protection Works

- As per National Building Code of India/applicable fire safety norms.

## Infrastructure

- Treated water supply system.
- Provision for cable TV.

## Recreation and Facilities

- Health club facility with fully equipped gym fitted with cable TVs, Jacuzzi, dance and aerobics section. Sports facility with tennis courts, swimming pool with baby splash, shower and changing areas. Club with lounge, billiards/pool room, card room, multi-purpose hall/party lounge and multi-cuisine restaurant. Kids crèche with tot lots, seesaws, baby slides, sand pit and party area. Mini Cineplex.



# Step in to the world of Emaar

Emaar is a pioneer in shaping skylines and lifestyles worldwide, developing vibrant communities that have redefined real estate in 12 countries across the Middle East, Africa, Asia, Europe, USA and Canada. Emaar's iconic projects and scale of operations have made it one of the world's leading real estate companies.

In India, Emaar is committed to creating best in class real estate developments that would set unmatched benchmarks in thoughtful architecture, excellent engineering and impeccable execution.

Step in to experience the grandeur!





[emaar-india.com](http://emaar-india.com)